

Figure 1. Schematic representation of our custom use of the ToF-SIMS instrument to perform molecular transfer and achieve the construction of protein thin films.

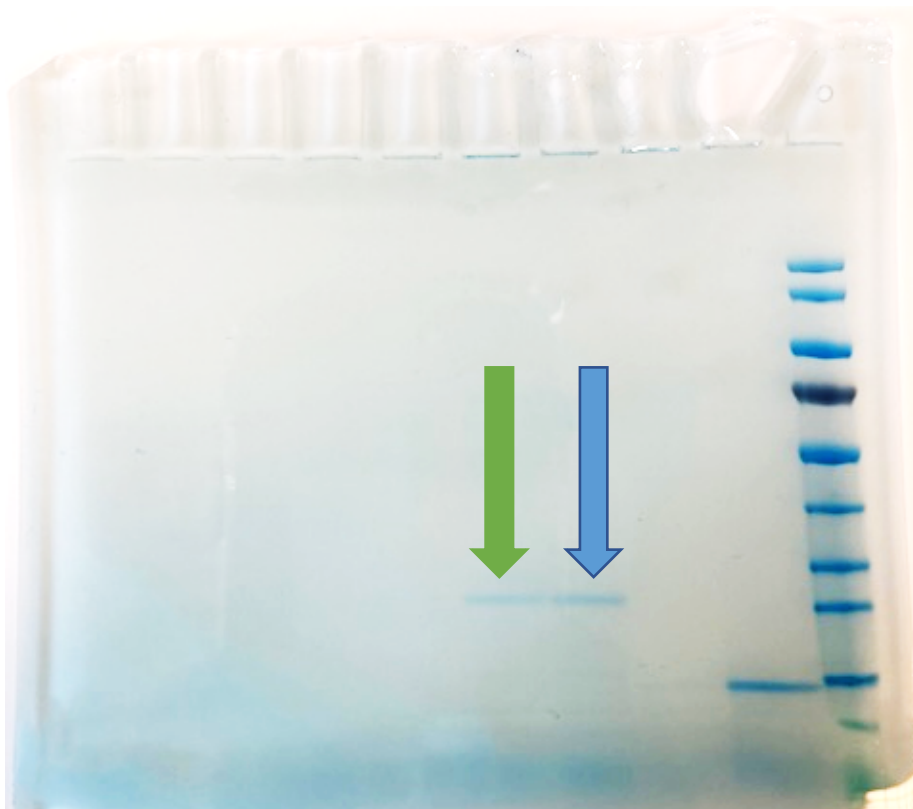


Figure 2. SDS-PAGE electrophoresis gel. Under the blue arrow, the reference of fresh trypsin in solution. Under the green arrow, the trypsin recovered from the collector after transfer with Ar_{5000}^{+} 10 keV. This indicates that trypsin could be transferred intact.