

Fig. 1. a) In situ matrix transfer principle, b) Mass spectra in the intact lipid ion range ($m/z = 730-820$) of an untreated tissue section (top) and a matrix transferred sample (bottom).

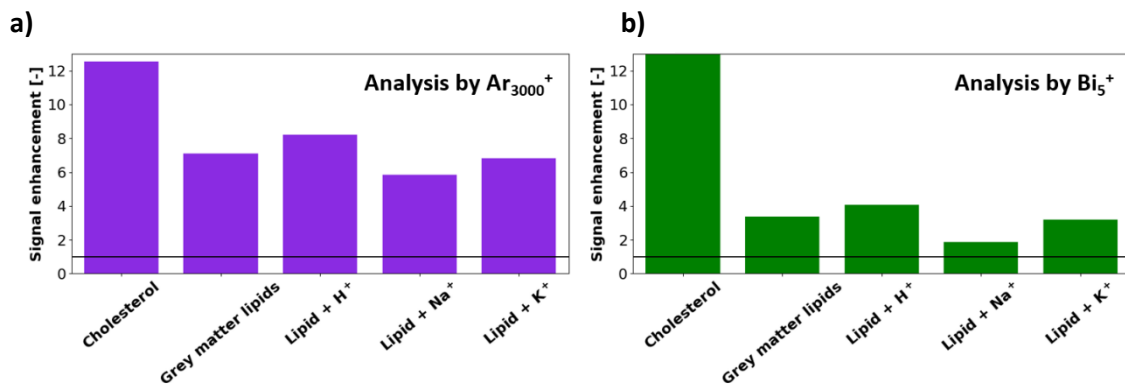


Fig. 2. Average signal enhancement in the grey matter of rodent brain. a) Enhancement for an analysis performed with Ar_{3000}^+ in the delayed extraction mode and b) enhancement for an analysis performed with Bi_5^+ as primary ion beam