

Figure 5. The Young's modulus of templated porous scaffolds A) Young's moduli of 40 μm PMMA templated scaffolds as a function of monomer composition and water content in monomer solution; B) Young's moduli of soft hydrogel (pHEMA-co-GMA, 75% water content) scaffolds with different pore sizes (40 μm and 100 μm).

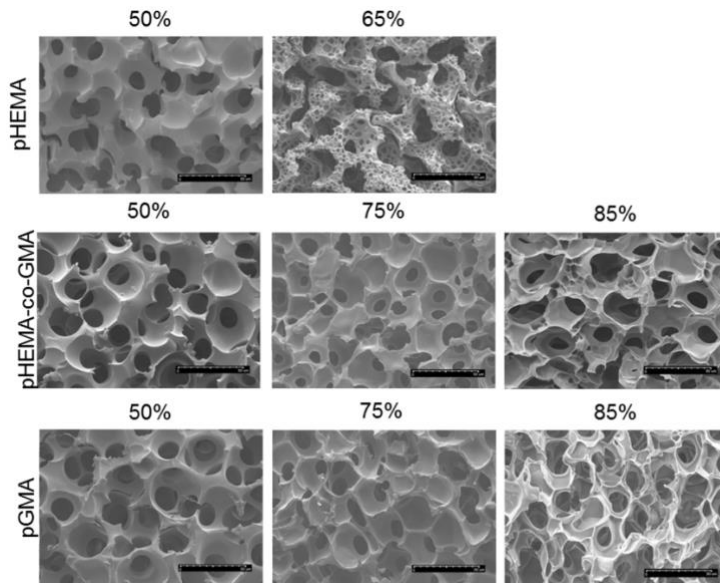


Figure 6. SEM images of macroporous structures in hydrogel scaffolds (templated using 40 μm PMMA microspheres) as a function of water content (indicated by the number above each image) and monomer compositions (scale bars: 50 μm).