

Figure 1: Scanning Electron Microscopy (SEM) image of WS₂ precipitates in the inoculated batch. The green circle shows the connection of *Shewanella oneidensis* MR-1 to a nanosheet. The red circle shows the connection via bacterial nanowires and biofilm to nanorods.

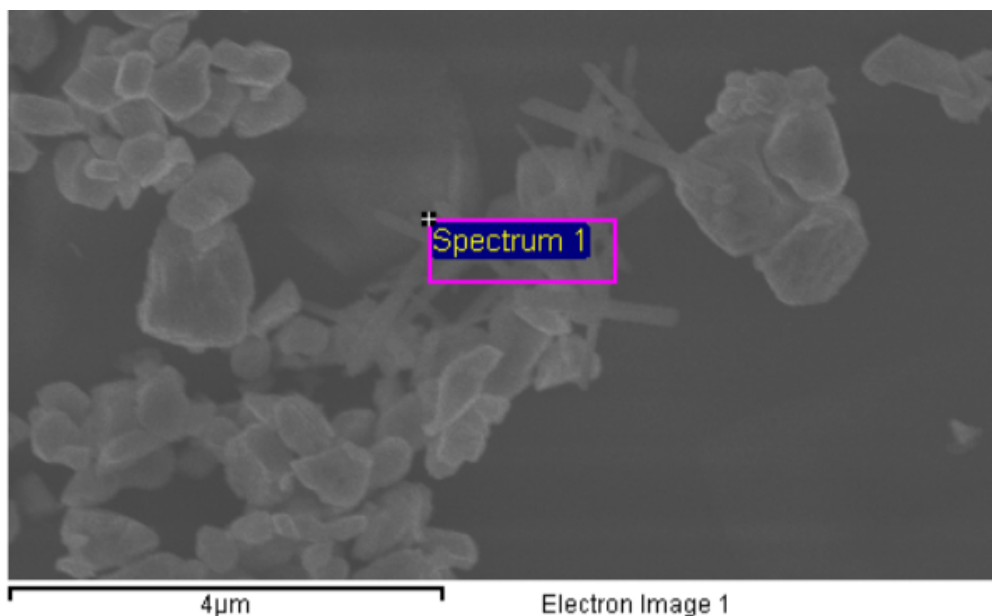


Figure 2: Energy-dispersive X-ray Spectroscopy (EDS) area analysis at the location given by the purple marker “Spectrum 1” identified 3.41% tungsten, 5.52% sulfur, 60.51% oxygen, 20.29% silicon, 5.70% carbon, 0.98% sodium, and 5.45% calcium by atomic percentage.