

Fig. 1. SEM top-view images of Mg-LCO using (a) 0W, (b) 30W, (c) 60W; SEM cross-sectional images of Mg-LCO using (d) 0W; (e) 30W; (f) 60W MgO power.

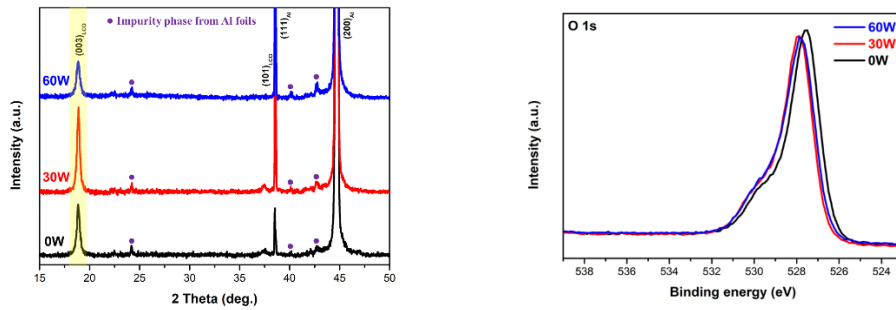


Fig. 2. XRD patterns and XPS spectra of 0W, 30W, and 60W Mg-LCO thin films.

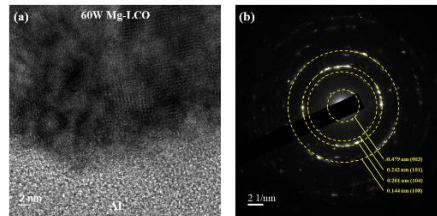


Fig. 3. (a) Cross-sectional HR-TEM image (b) SAED pattern of the 60W Mg-LCO thin films.

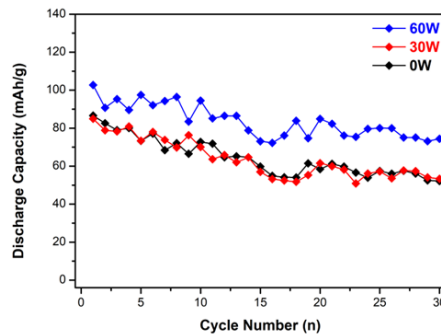


Fig. 4. Cycling performance after 30 cycles between 3.0 and 4.2 V at 0.2 C rate.