

Fig. 2

Fig. 1 shows digital image of petriplates of bare Nitinol substrate (a,c) and graphene-coated samples (b,d) for E.Coli bacteria (a,b) and S.Aureus (c,d). Fig.2 shows cell-viability assay for both bare and graphene-coated samples.

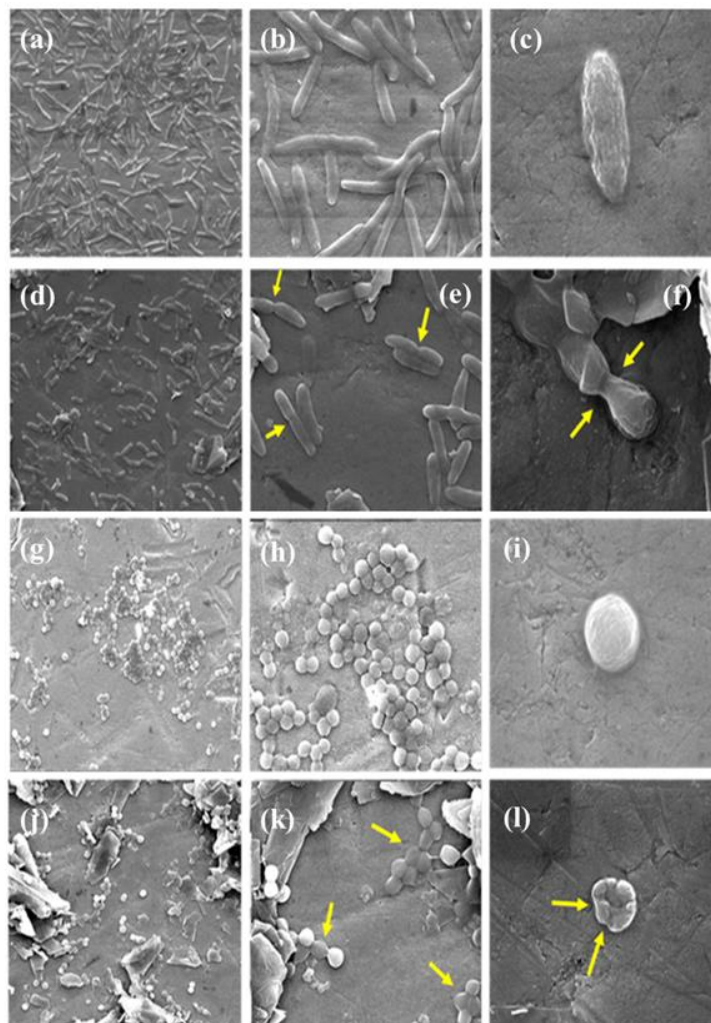


Fig. 3 shows SEM images of bare Nitinol substrate (a,b,c) and graphene-coated sample (d,e,f) for E.Coli bacteria; bare Nitinol substrate (g,h,i) and graphene-coated sample (j,k,l) for S.Aureus bacteria.