

## Supplemental Document

Figures 1 and 2 show SEM images of the structures obtained. Figure 3 shows the transmission and absorption spectrum of the film, depicting the polarization effects of these structures. Figure 4 presents the temperature distribution of the *in-situ* thermal acquisitions and simulations during laser treatment. A good agreement between experiment and measurements are obtained for temperatures below the structuration threshold.

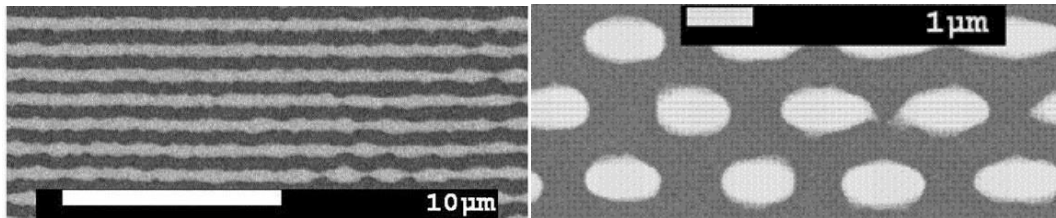


Fig. 1: SEM images of Ag lines and islands (bright regions) obtained through laser dewetting using a Continuous Wave laser [1].

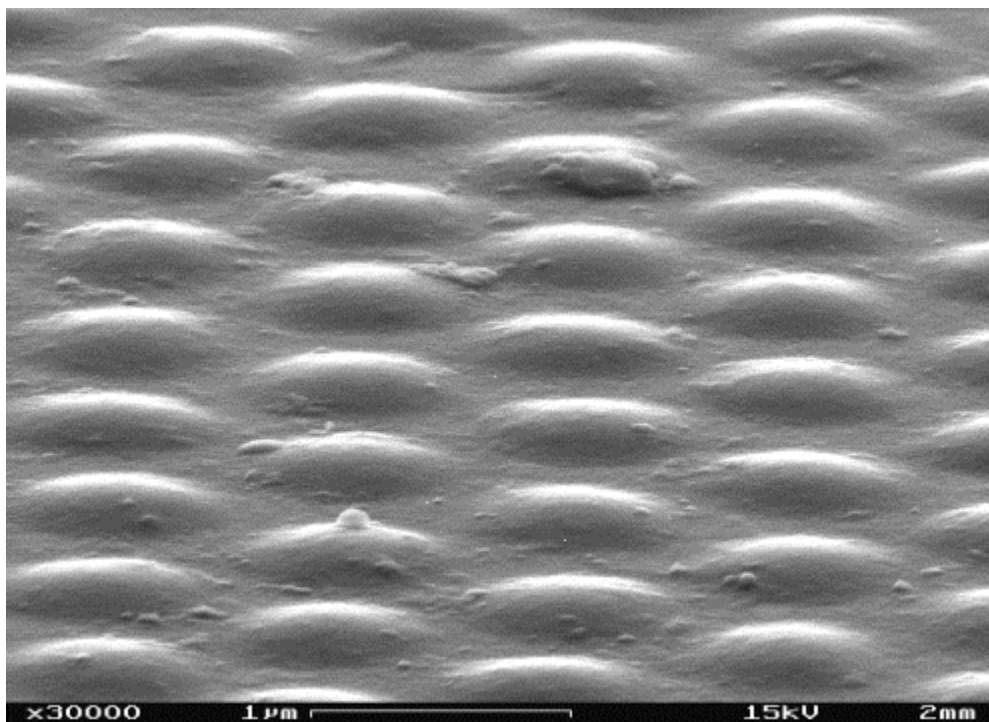


Fig 2: Tilted SEM image of Ag islands.

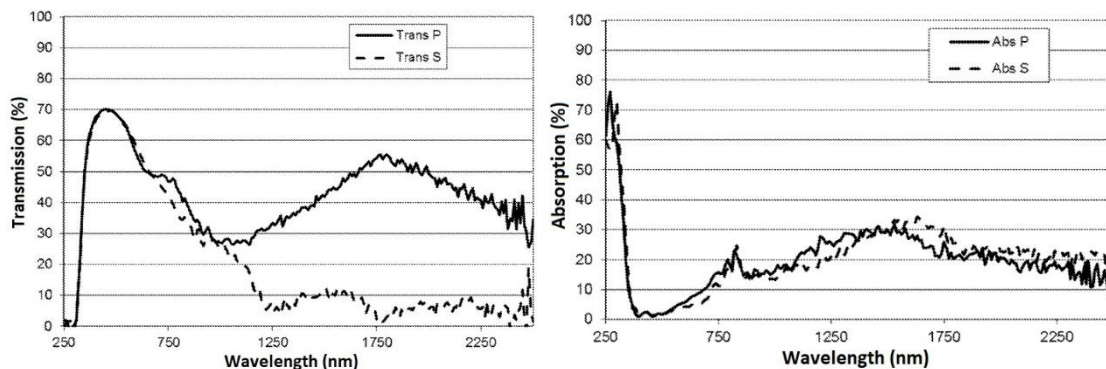


Fig. 3: Transmission and absorption spectrum of these structures [1].

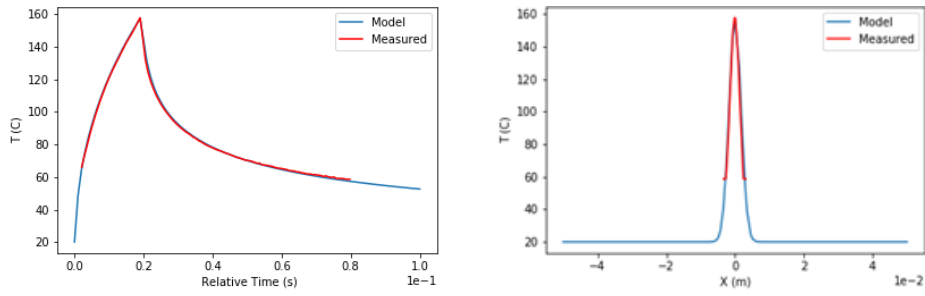


Fig. 4: Spatial and temporal temperature distribution obtained by simulation and in-situ measurements.

**References:**

- [1] Palacios-Laloy, A., *Method for Obtaining a Substrate Provided with a Coating Comprising a Discontinuous Thin Metal Layer*, **WO 2015/025093**, European Patent Office (2017)