

Fig. 1 Schematic of the plasma torch manufactured by AcXys Plasma Technologies

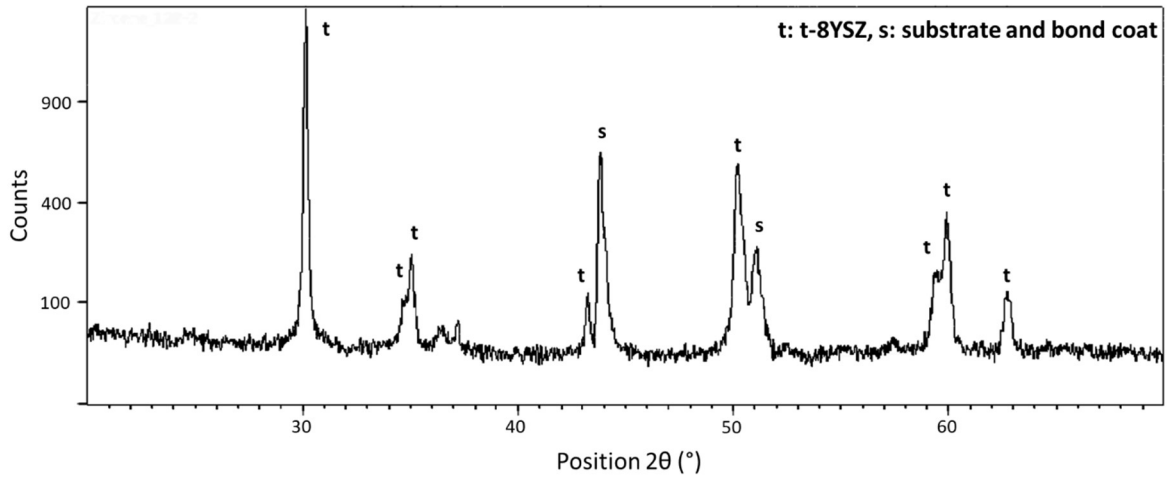


Fig. 2 XRD spectra obtained from a coating annealed at 1100 °C for 1 h (rate: 200 °C/h)

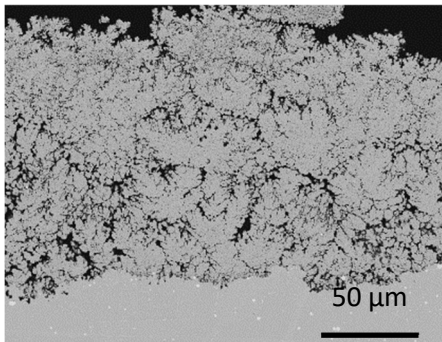


Fig. 3 Cross-sectional SEM image of YSZ coating deposited by low power plasma

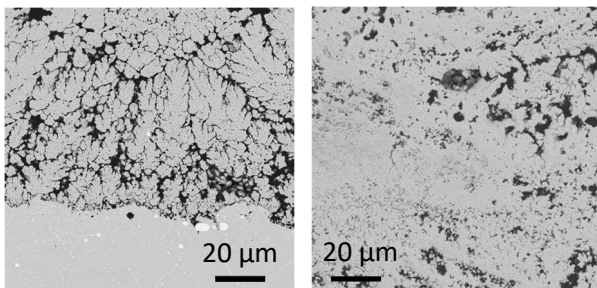


Fig. 4 Cross-sectional SEM images of coatings exhibiting columnar (left) and denser (right) morphologies