

Fig. 1: β -Ga₂O₃ MOSFET device schematic

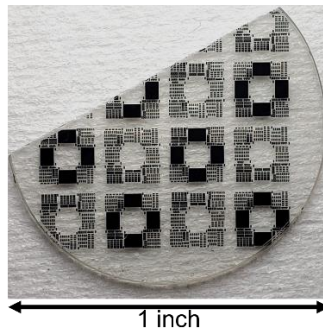


Fig. 2: MOSFETs on 1in. Synoptics (010) β -Ga₂O₃ wafer

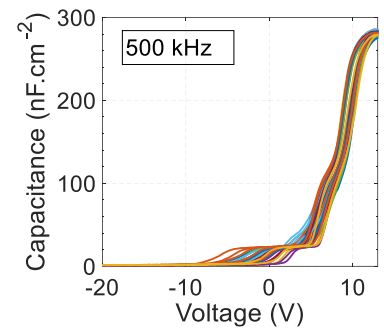


Fig. 3: Wafer-scale MOSCAP CV characterization

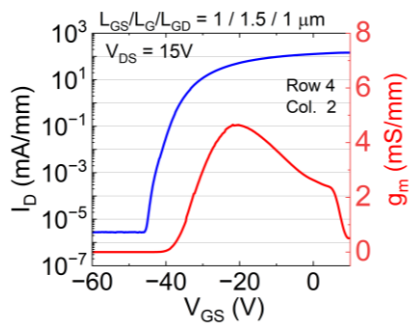


Fig. 4: Transfer Characteristics

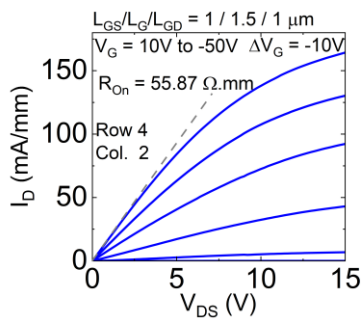


Fig. 5: Output Characteristics

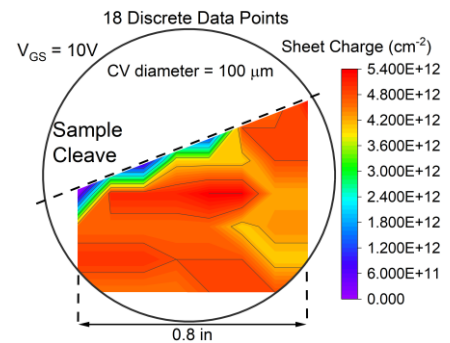


Fig. 6: Sheet charge map across the wafer at +10V V_{GS} from CV measurements

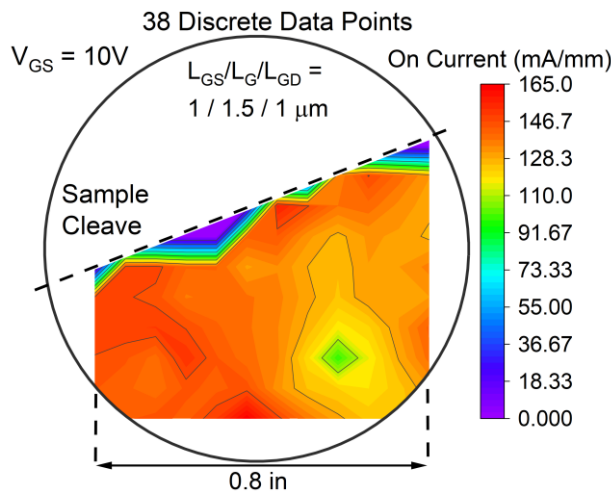


Fig. 7: On-current (I_D) map across the wafer at $V_{GS} = +10$ V, $V_{DS} = 15$ V showing uniform current levels across the wafer

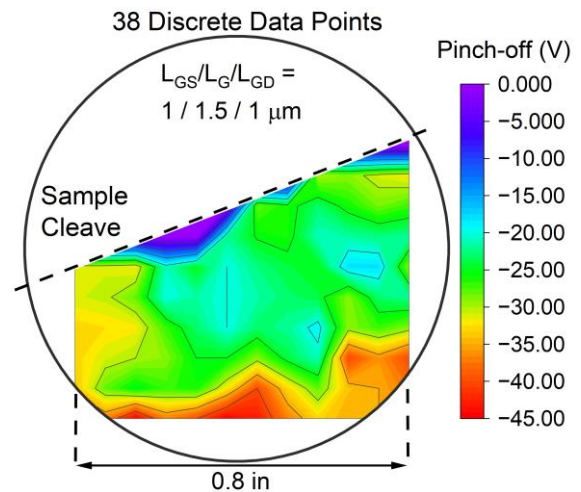


Fig. 8: Pinch-off Voltage Map (extracted from transfer curves) across the wafer