

Supplemental Figures for CNT Growth on Stainless Steel

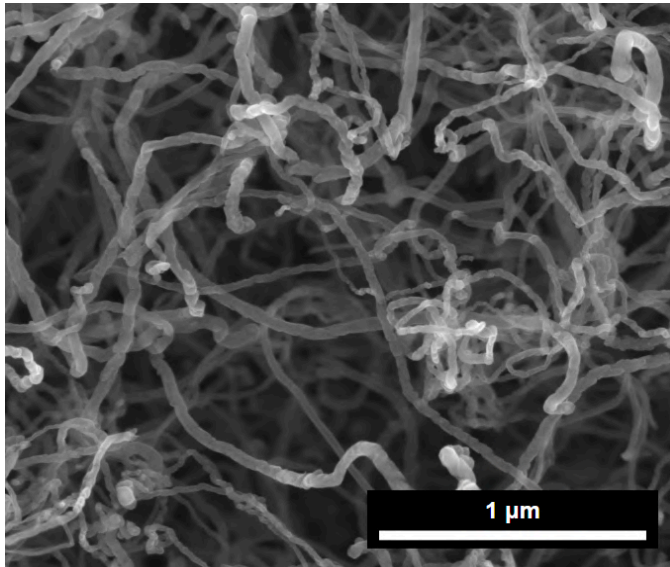


Figure 1. Top down view in SEM of the CNTs grown on stainless steel substrate. The growth is very short, with CNTs only growing to be 1-10 microns long.

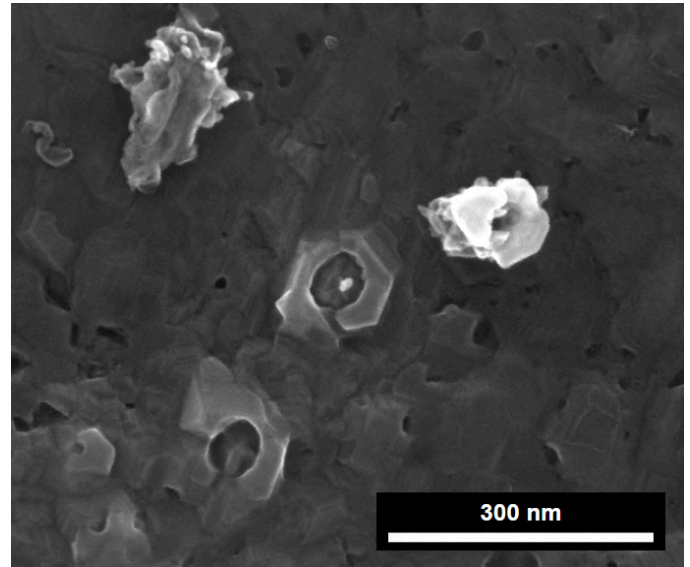


Figure 2. When CNTs are scraped away from the substrate, holes are often left behind. The central hole above has a bright particle that was at the base of the CNT.

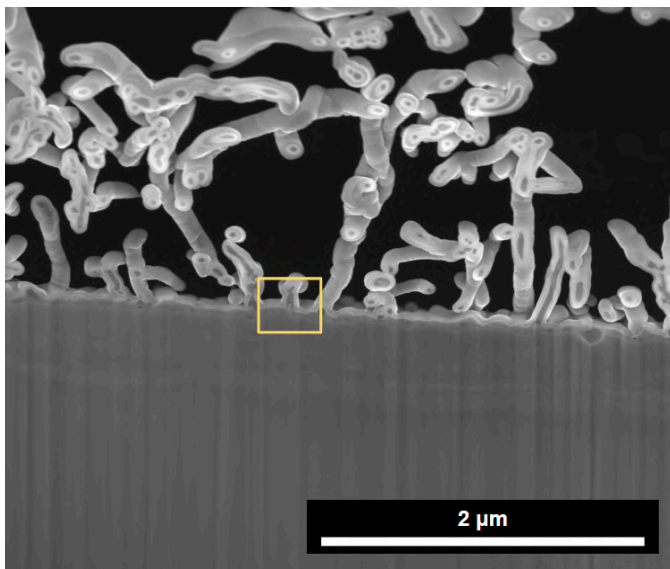


Figure 3. Example of a cross-section of CNTs growing from the steel substrate. This cross-section was made by focused ion beam (FIB) milling. The boxed area is magnified in STEM in Figure 4.

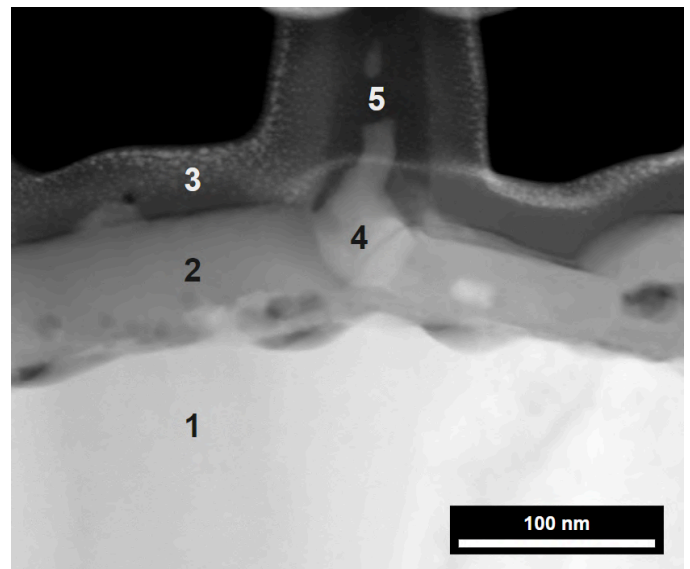


Figure 4. STEM image of a CNT-substrate interface. 1) The stainless steel substrate. 2) The surface oxide layer. 3) A protective alumina layer formed by ALD. 4) An iron-rich catalyst particle. 5) A carbon nanotube.