

Graded $\text{CdSe}_x\text{Te}_{1-x}$ /CdTe thin-film solar cells: In-situ dopant profiling during light soaking

Sanghyun Lee^a and Kent Price^b

^aDepartment of Electrical and Computer Engineering and Fujio Cho Department of Engineering Technology, Pigman College of Engineering, University of Kentucky

^bDepartment of Physics, Morehead State University

The surface morphology of $\text{CdSe}_x\text{Te}_{1-x}$ films by Scanning Electron Microscopes.

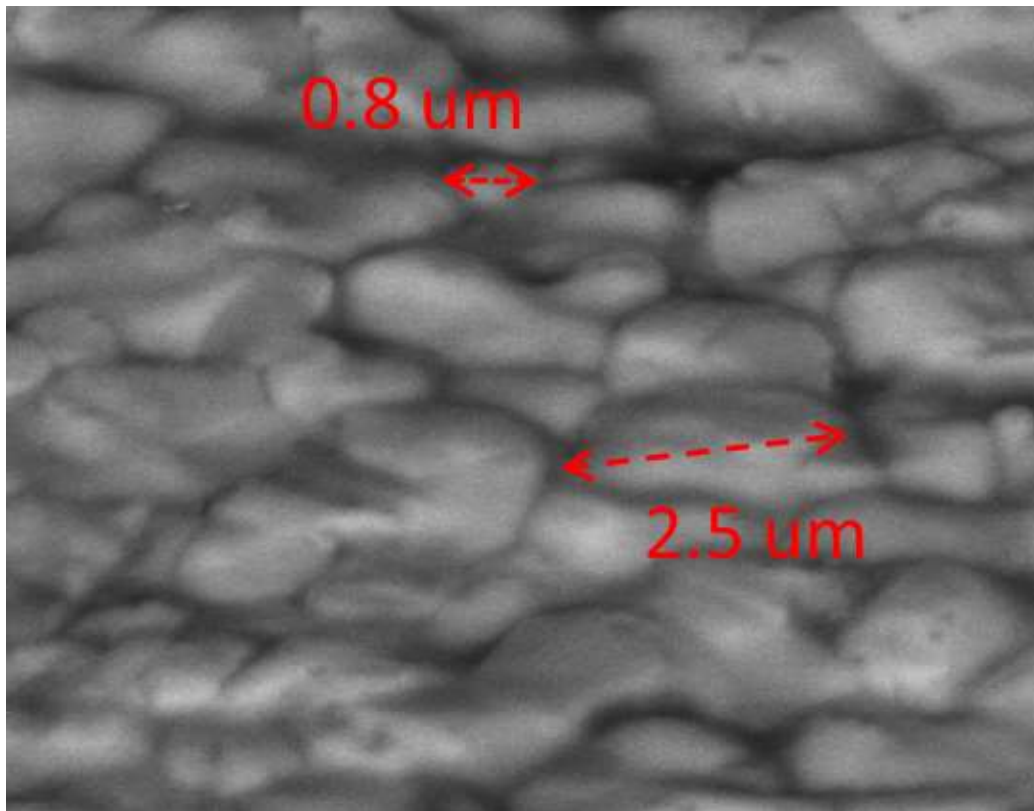


Fig. 1. Grains of $\text{CdSe}_x\text{Te}_{1-x}$ /CdTe films grown by Vapor Transport Deposition Technology. The size of columnar grain ranges approximately 0.8 – 2.5 μm throughout the film.