

# A model interstellar medium reactivity study: Low energy electron induced chemistry of $\text{CH}_3\text{OH}@H_2\text{O}$

Ahmad Nawaz<sup>1</sup> and Micha Asscher<sup>1\*</sup>

<sup>1</sup> Surface Science Laboratory, Institute of Chemistry, The Hebrew University of Jerusalem, Israel

\*Corresponding author: [micha.asscher@mail.huji.ac.il](mailto:micha.asscher@mail.huji.ac.il)

## Abstract

The typical mass spectra of the parent molecules within the sandwich layer (16 ML) are shown in Figure 1. Here, the MeOH peaks appears at  $\sim 140\text{K}$  while the water desorption peak is at  $\sim 160\text{K}$ .

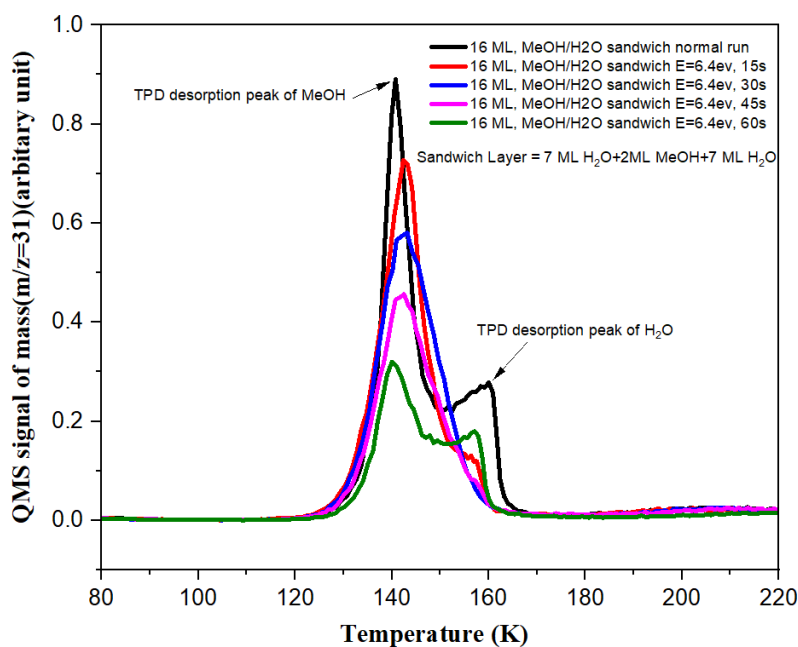


Fig. 1: a) TPD of 16 ML sandwich layer [7ML  $\text{H}_2\text{O}$  / 2ML  $\text{MeOH}$  / 7ML  $\text{H}_2\text{O}$ ] detected at mass 31 that reflects the parent methanol, with its multilayer peak at 140K and trapped molecules in ASW that desorb at 160K