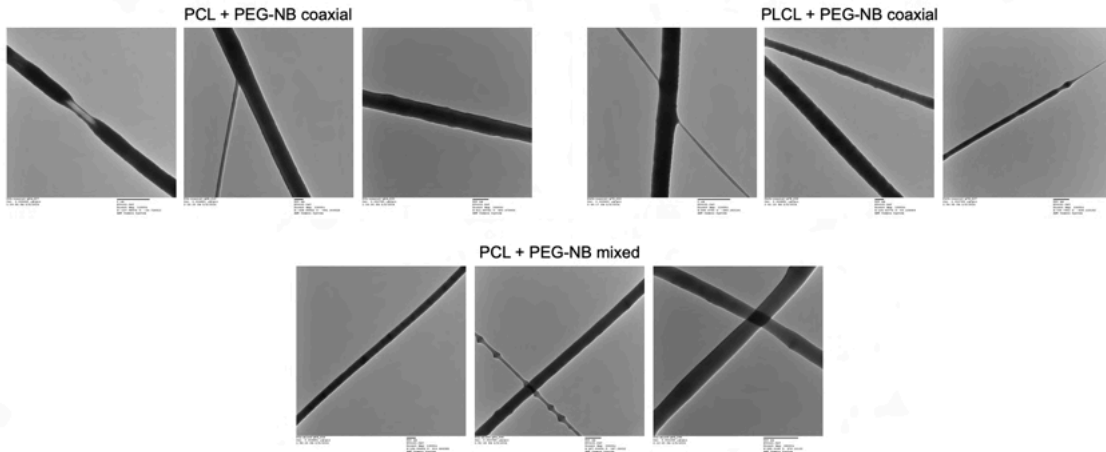
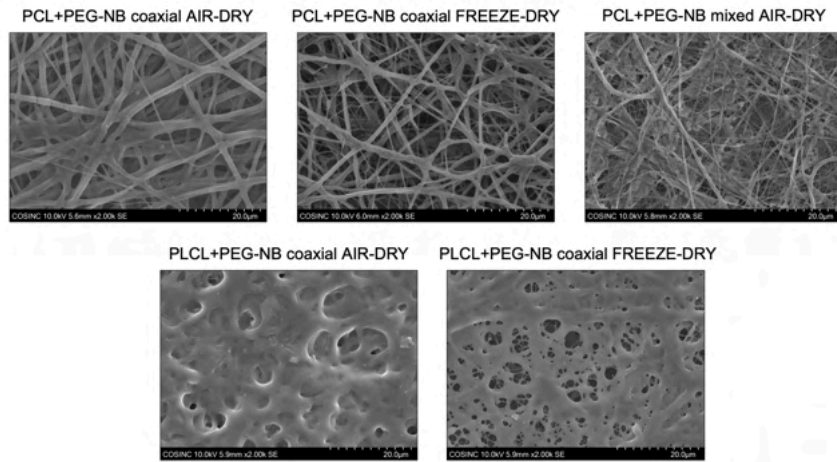


Preliminary Results – TEM

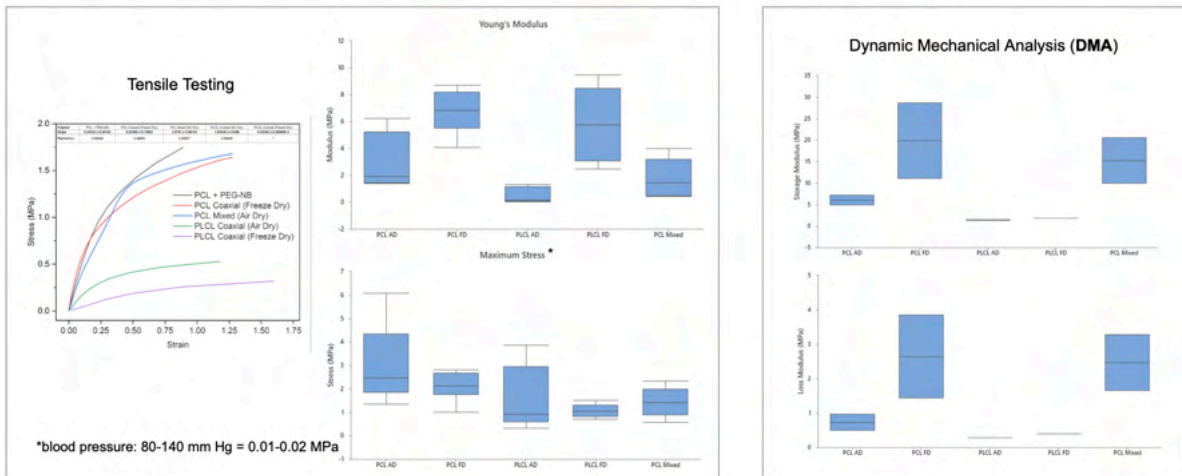


Preliminary Results – SEM*



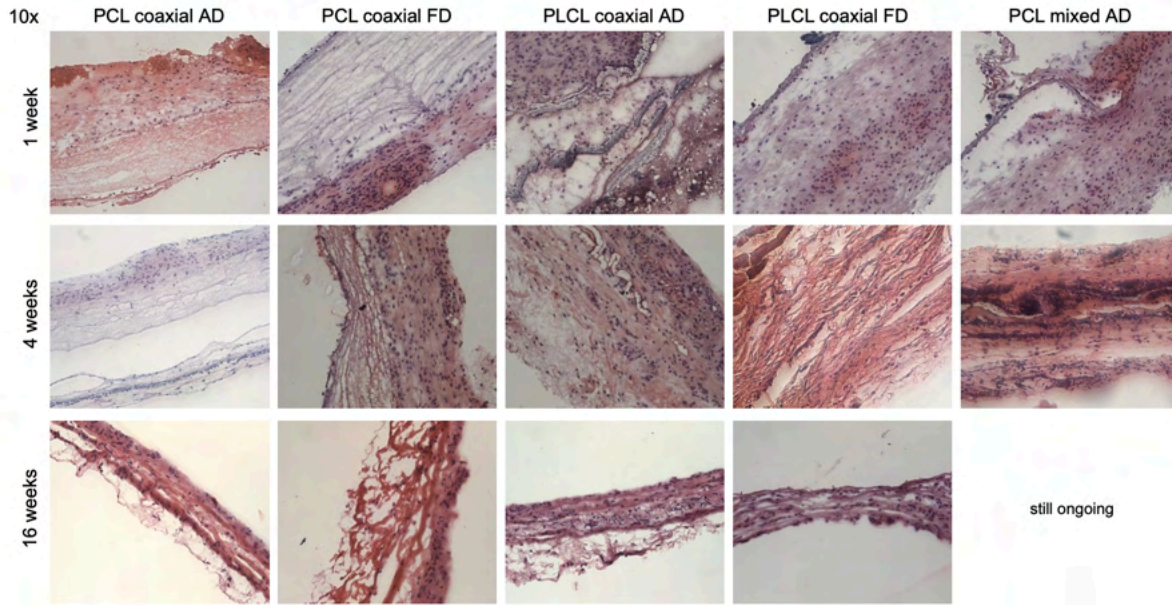
*samples were soaked for 24 hours in PBS and then air/freeze-dried.

Preliminary Results – Mechanical Test*



*mechanical tests were performed in wet conditions; samples were soaked for 24 hours in PBS before testing.

Preliminary Results – H&E staining (Subcutaneous Implants)



Preliminary Results – Platelet Adhesion Study

Platelet Adhesion – Experiment 1 (02/28) – 1 hour

