

Fig 1: Fluorescence image of a star activated by DAPI marker.

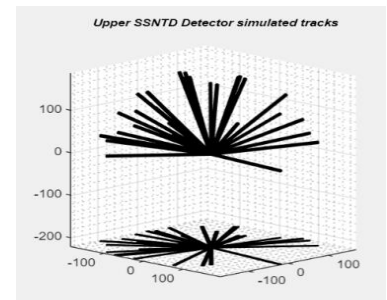
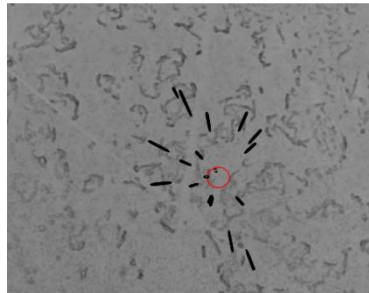
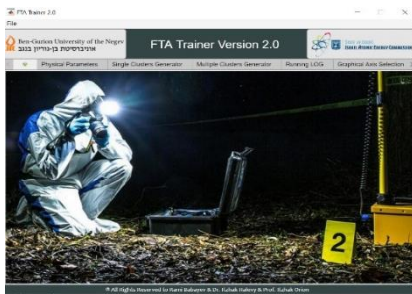


Fig 2: (a) The new Trainer2.0 Software. (b) Simulated star of 1.5 μm diameter U particle, natural enrichment. (c) simulated tracks on the upper detector.

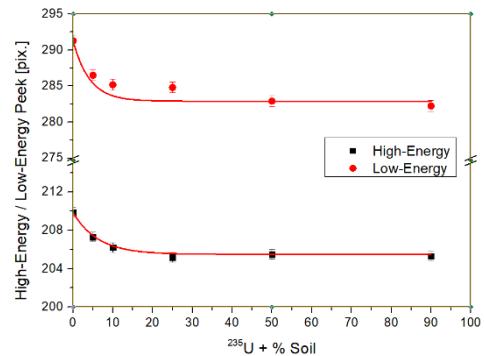
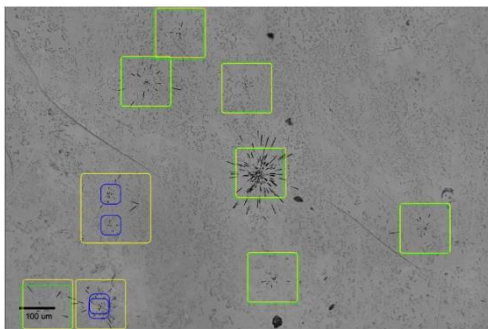
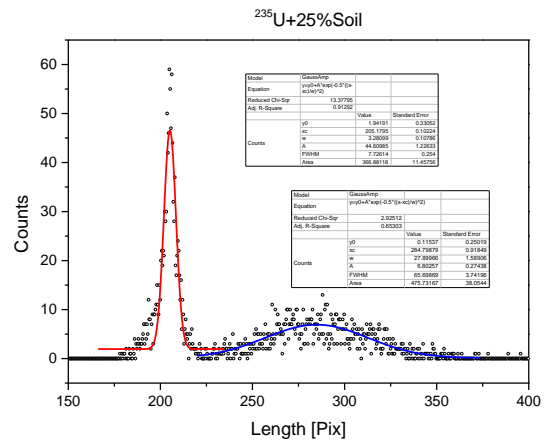
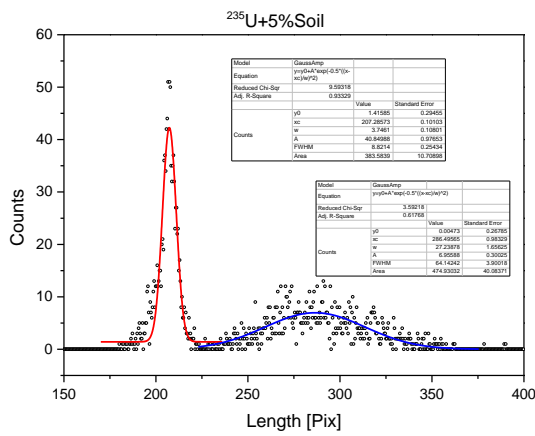


Fig 3: simulated of the classical situation ^{235}U partial agglomerate with different percentages of soil.