

Figure 1: Chlorination/Ligand Addition Mechanism for CoO ALE using SO₂Cl₂/TMEDA

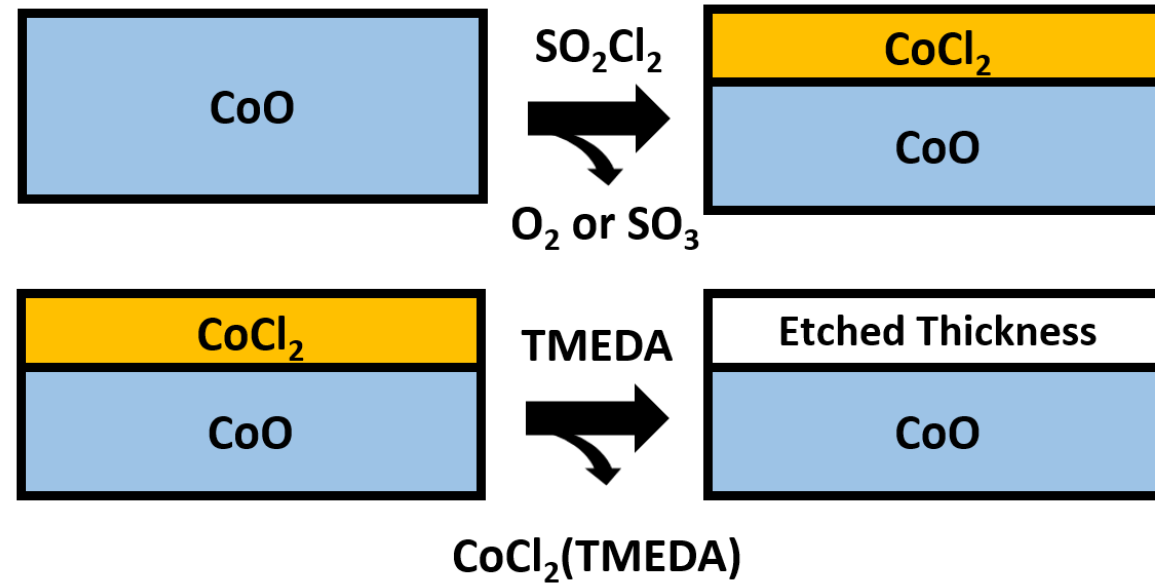


Figure 2: CoCl₂(TMEDA) Etch Product Observed during TMEDA dose on CoO at 250°C

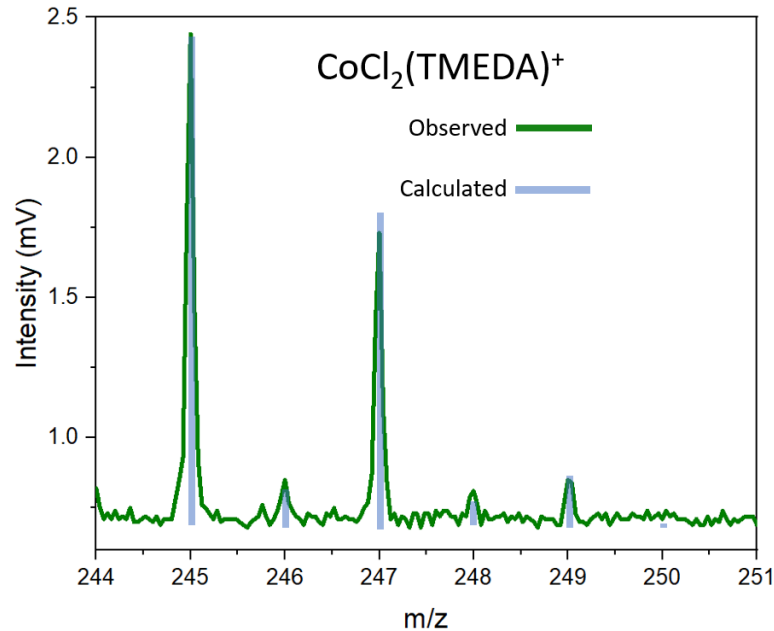


Figure 3: Time Evolution of CoCl₂(TMEDA) during TMEDA dose

