

Total gas pressure gage

$$\Delta P = P (\text{Valve B open, A close}) - P (\text{Valve A open, B close})$$

Turbo molecular pump

Pumping speed
≅ 65 L/S

Valve A

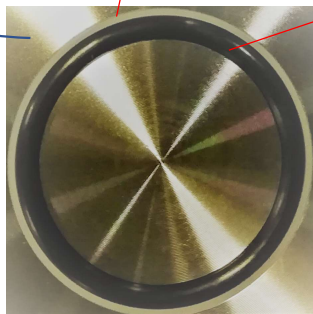
Valve B

Reference Flange

Test Flange

Normal Back-up ring seal

Elastomer seal (JIS B 2401 V40)



Covering ratio
of Divided Back-up ring seal (0 %)



Covering ratio
of Divided Back-up ring seal (75%)



Covering ratio of Divided Back-up ring seal (99.9%)

ΔP (Gas transmission rate/Pumping speed)
vs Covering ratio of Back-up ring seal (%)

