

A High Resolution Tandem MS Imaging Method to Probe the Composition of Cellular Organelles

Gregory L. Fisher¹, Corryn E. Chini², Ben Johnson³, Michael M. Tamkun³, and Mary L. Kraft²

¹ Physical Electronics, Chanhassen, Minnesota, USA

² University of Illinois at Urbana-Champaign, School of Chemical Sciences, Urbana, Illinois, USA

³ Colorado State University, Department of Biochemistry and Molecular Biology, Fort Collins, Colorado, USA

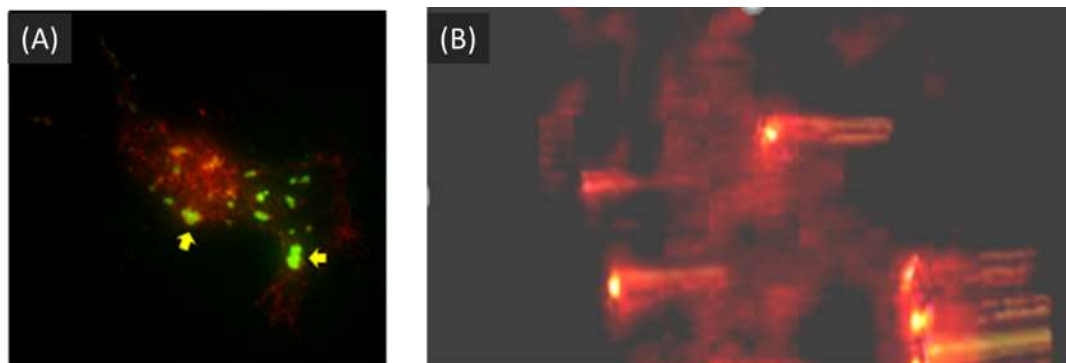


Figure 1: (A) TIRF microscopy overlay image of GFP-Kv2.1 clusters (green) and DsRed2-ER in the endoplasmic reticulum (red). Intense red patches indicate ER tubules within the illumination field. The yellow arrows indicate where the green and red fluorescence overlap at the PM adjacent to the glass substrate. (B) TOF-SIMS tandem MS image revealing the ER and the ER tubules which extend toward the PM. The displayed analysis volume is approximately 50 μm x 30 μm x 40 nm. The image is 512 x 512 pixels and expanded in the z-dimension, with rotation, for easy visualization of the ER tubules.

Acknowledgements

This research was supported by the National Institute of General Medical Sciences of the NIH under Award Number R01GM109888, and the NSF under CHE-1508662. The content is solely the responsibility of the authors and does not necessarily represent the official views of the NIH or NSF.

References

- [1] A.N. Yeager, P.K. Weber, M.L. Kraft, *Biointerph.* **11** (2016) DOI: 10.1116/1.4939681.
- [2] (a) G.L. Fisher, A.L. Bruinen, N. Ogrinc Potočnik, J.S. Hammond, S.R. Bryan, P.E. Larson, R.M.A. Heeren, *Anal. Chem.* **88** (2016) 6433-6440. (b) G.L. Fisher, J.S. Hammond, S.R. Bryan, P.E. Larson, R.M.A. Heeren, *Microscop. Microanal.* **23** (2017) 843-848. (c) N. Ogrinc Potočnik, G.L. Fisher, A. prop, R.M.A. Heeren, *Anal. Chem.* **89** (2017) 8223-8227.
- [3] K.M.S. O'Connell, M.M. Tamkun, *J. Cell Sci.* **118** (2005) 2155-2166.