

Supplemental of Direct electron beam imaging of proteinaceous fibrils

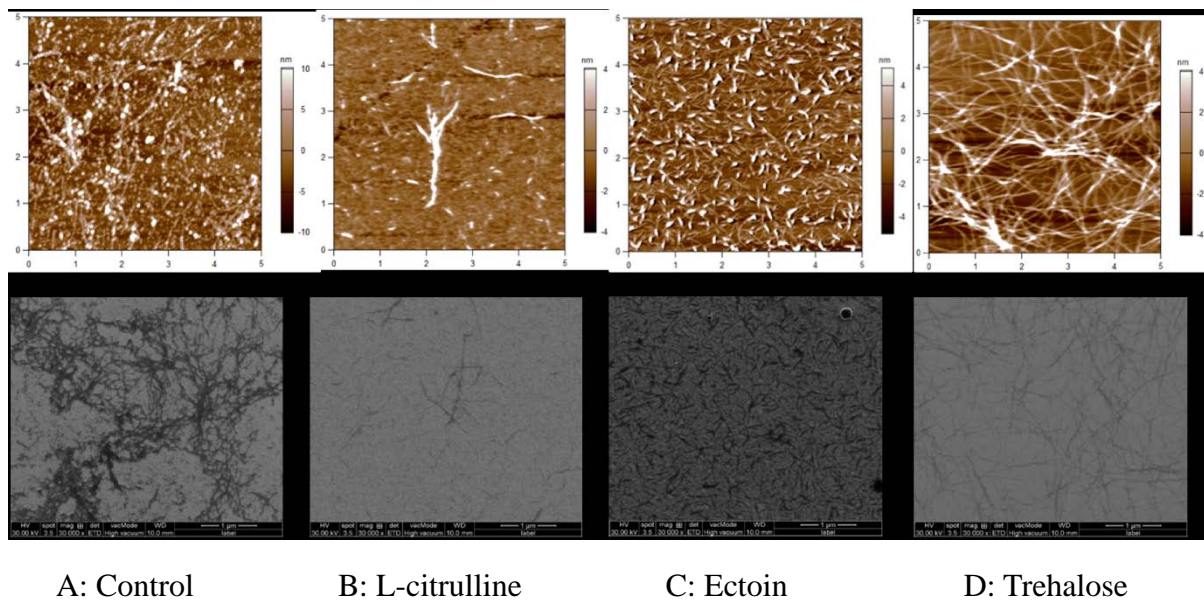


Figure 1. AFM(upper) and SEM (lower) images of the same samples containing or not containing inhibitors after 12 hrs of fibrils growth

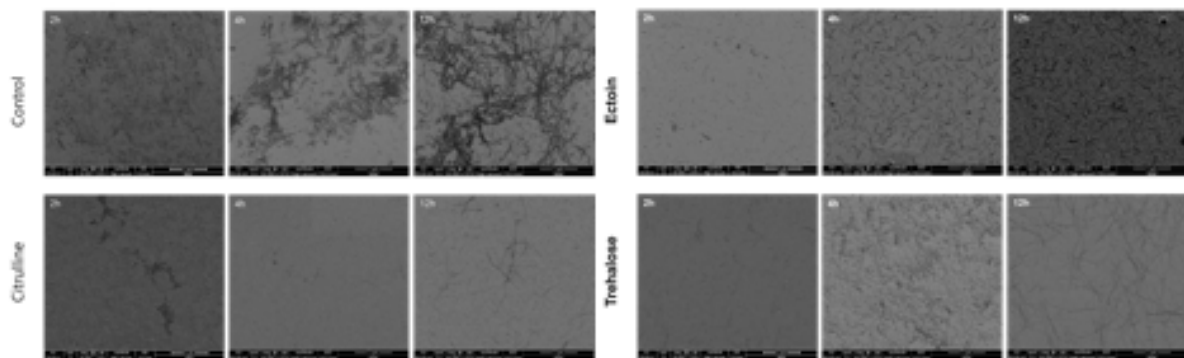


Figure 2. SEM images of insulin amyloid fibrils with or without the presence of L-citrulline, ectoin and trehalose after 2, 4 and 12 hour of fibril growth.

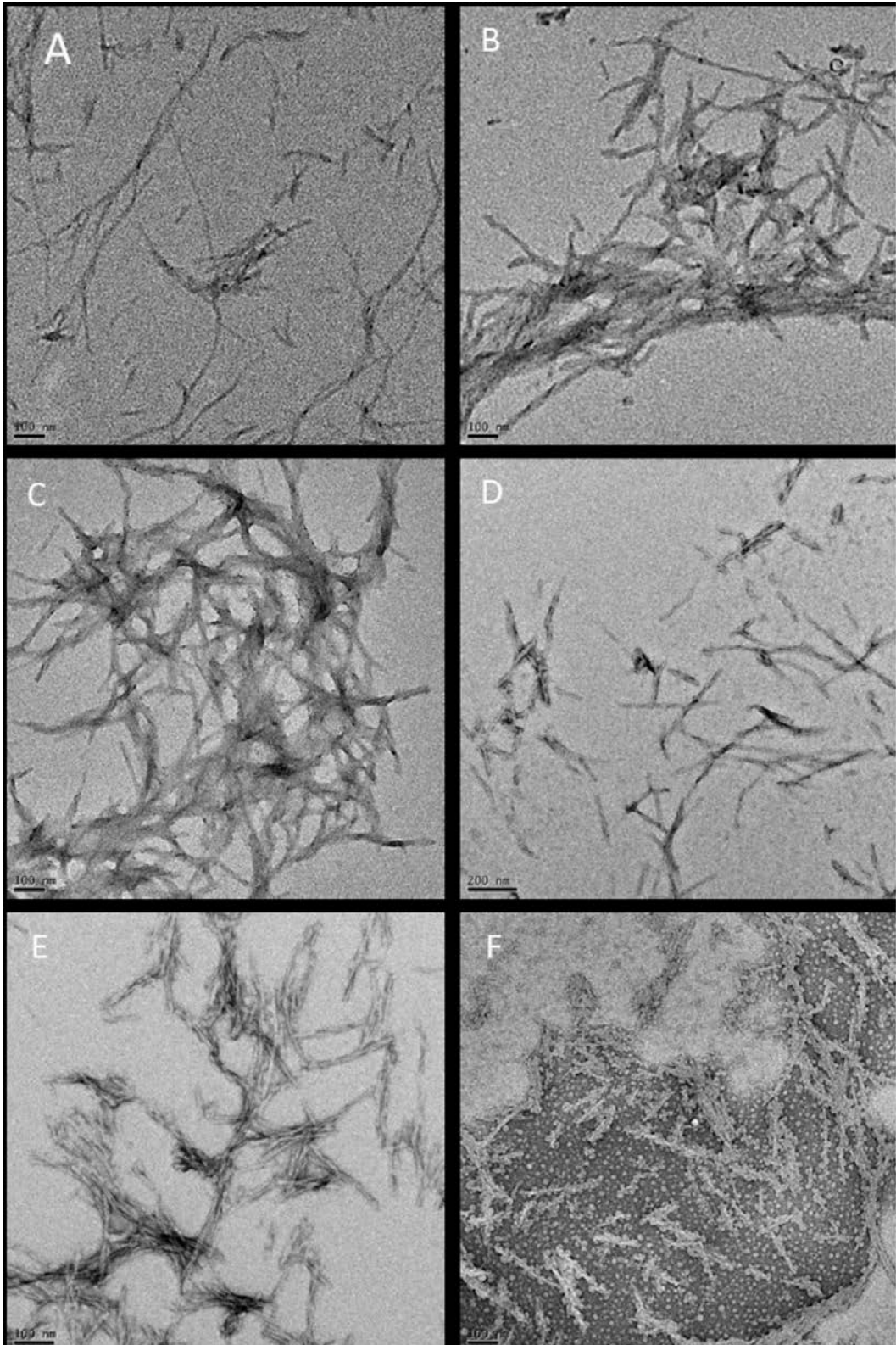


Figure 3: TEM images of insulin amyloid fibrils with and without negative staining using uranyl formate. A: non stained fibrils. B-F: stained samples with different time interval. B: 30 seconds, C: 1 minute, D: 2 minutes, E: 4 minutes, F: 6 minutes.