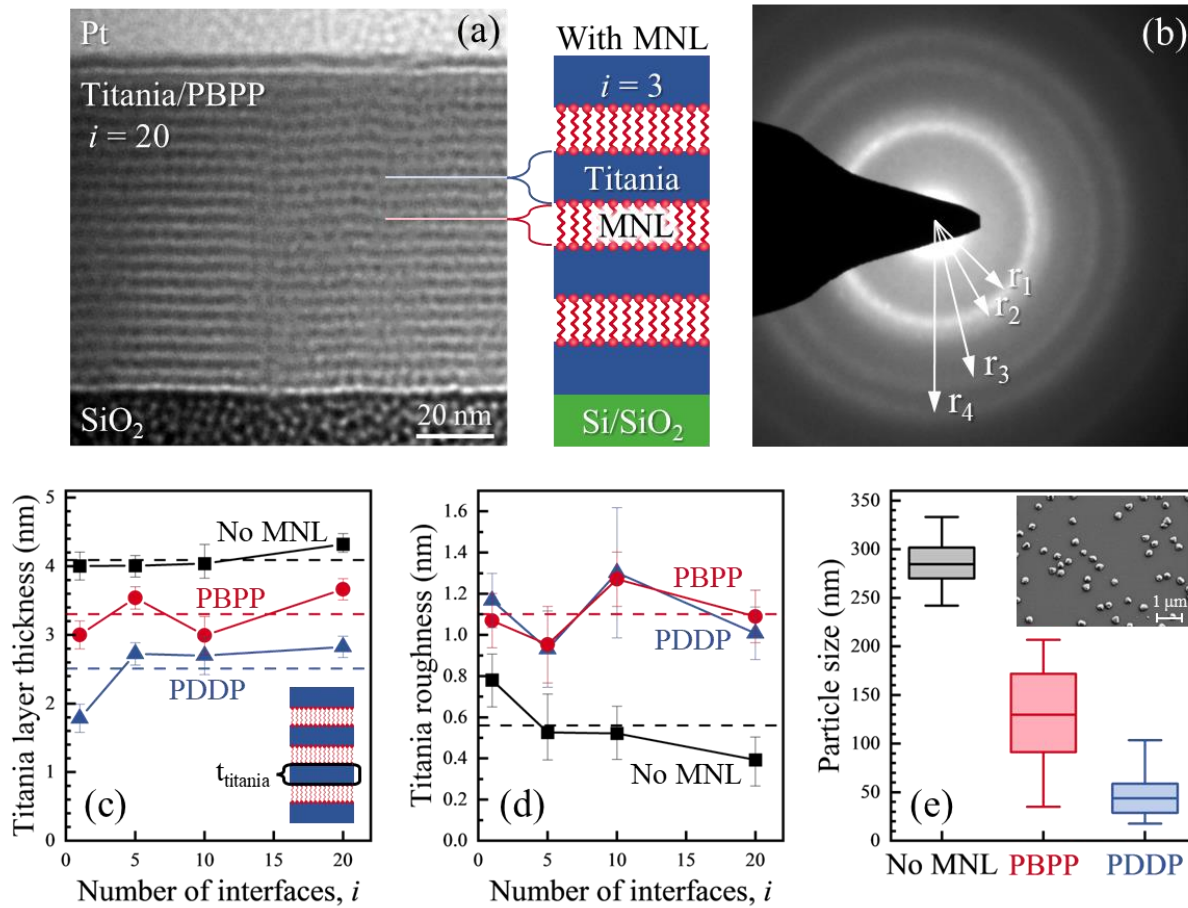


Compilation of select figures capturing key results on *Nanomolecularly-induced effects on the synthesis and stability of multilayered titania/organophosphonate interfaces* by Rowe et. al.



Figures capturing key results: (a) Cross-section TEM image from multilayers of titania nanolayers and organo-diphosphonate molecular nanolayers (MNLs) with number of nanomolecularly tailored interfaces $i = 20$. The schematic shows a multilayered structure with $i = 3$. (b) Electron diffractogram indicating anatase-like short-range order in the amorphous titania nanolayers. (c) Individual titania nanolayer thicknesses t_{titania} in multilayers with aliphatic (PDDP) and aromatic (PBPP) organophosphonate MNLs, and titania films with no MNLs. (d) Surface roughness of multilayered films with PDDP and PBPP MNLs, and titania films with no MNLs. (e) Titania nanocrystal size distribution in titania films with $i = 20$ with and without MNLs. The inset SEM image shows the surface of a $i = 20$ film with no MNLS.