

Fig. 1: HZO MFM device schematic cross section.

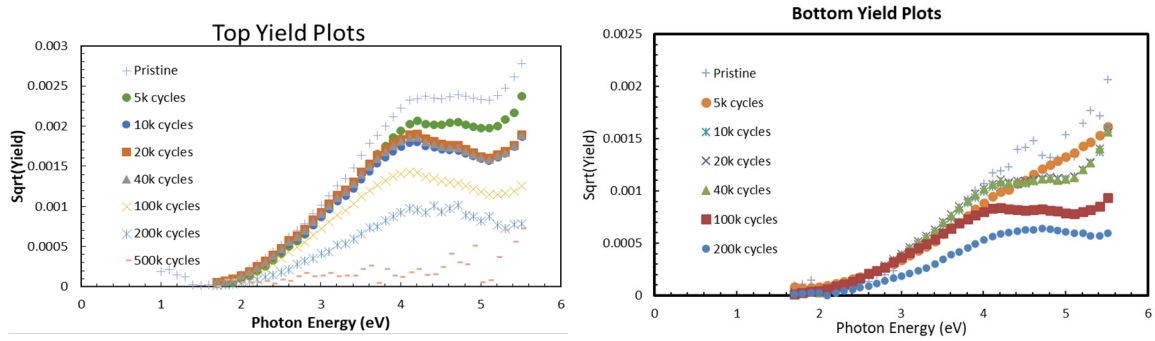


Fig 2. Plots of square root IPE yield vs. photon energy for (left) top, and (right) bottom electrode interfaces as a function of voltage sweep cycling. The onset of photoconduction at ~ 5.2 eV, corresponding to the HZO bandgap, was unchanged until at least 100k cycles.