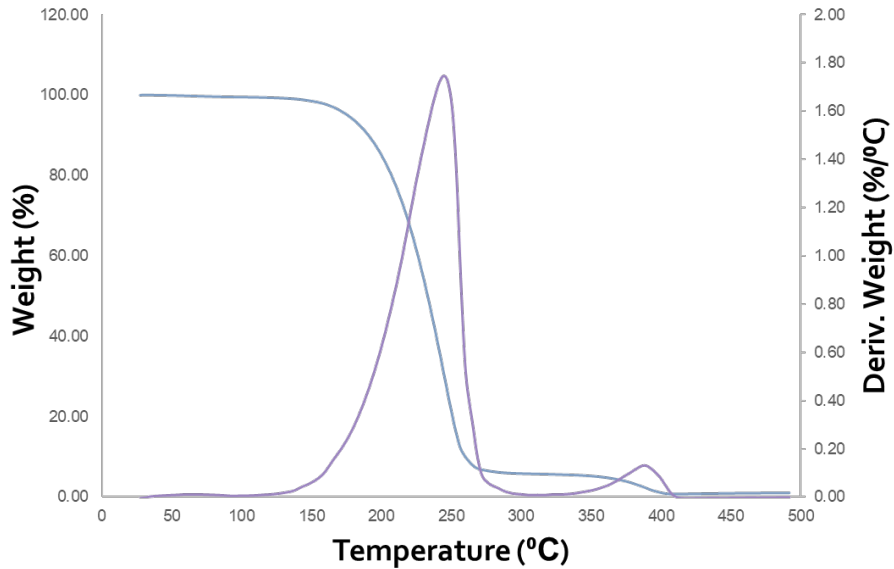
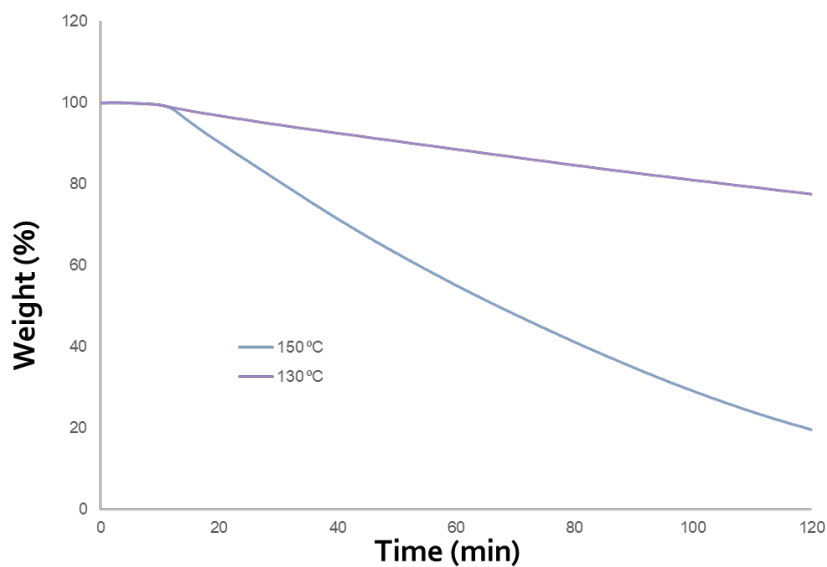


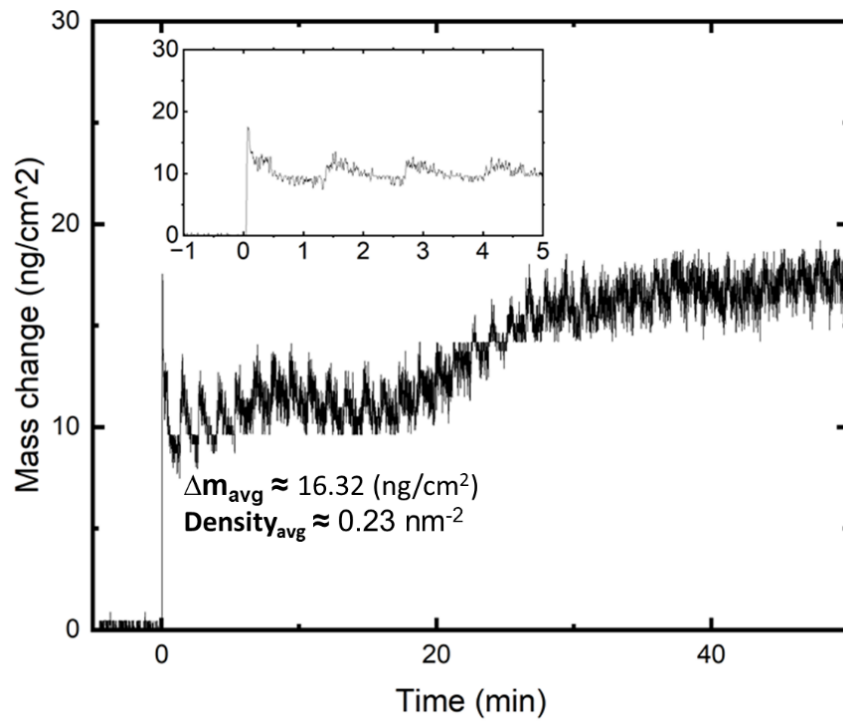
Structure of the Zintl $(Me_3Si)_3P_7$ and the corresponding deposition process for P_xM_y films (M= Group 13 element).



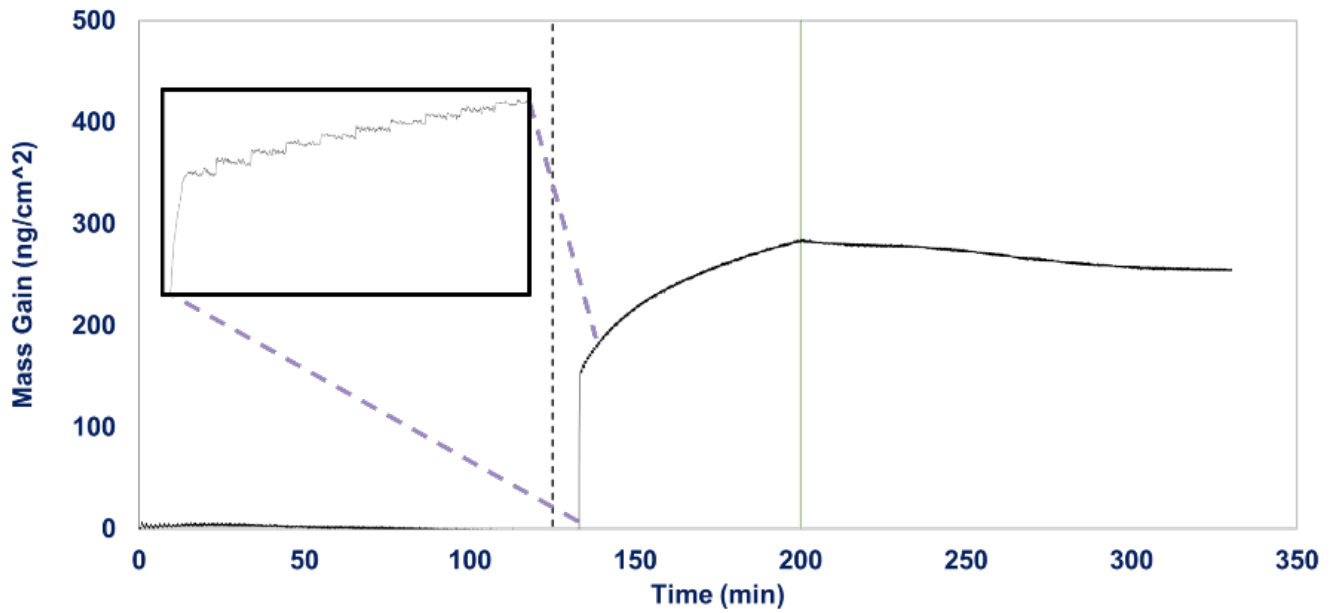
Thermal Gravimetric analysis of $P_7(SiMe_3)_3$; ramp $10\text{ }^\circ\text{C}/\text{min}$.



Thermal Gravimetric analysis of $P_7(SiMe_3)_3$; isotherms at $130\text{ }^\circ\text{C}$ and $150\text{ }^\circ\text{C}$.



Quartz crystal microbalance analysis; half-cycle saturation of $\text{P}_7(\text{SiMe}_3)_3$ on Al_2O_3 .



Quartz crystal microbalance analysis; continuous growth of $\text{P}_7(\text{SiMe}_3)_3$ (0.1s pulse, 10s purge) with AlMe_3 (0.1s pulse, 10s purge) on polished Au.