

Supporting document for the abstract “MLD of Phosphane-ene polymer thin films: Bringing solution polymer chemistry to a gas phase process”.

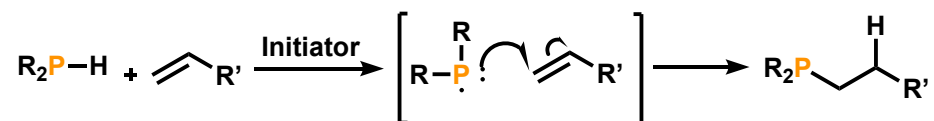


Figure 1: A typical phosphane-ene reaction that utilizes a radical source.

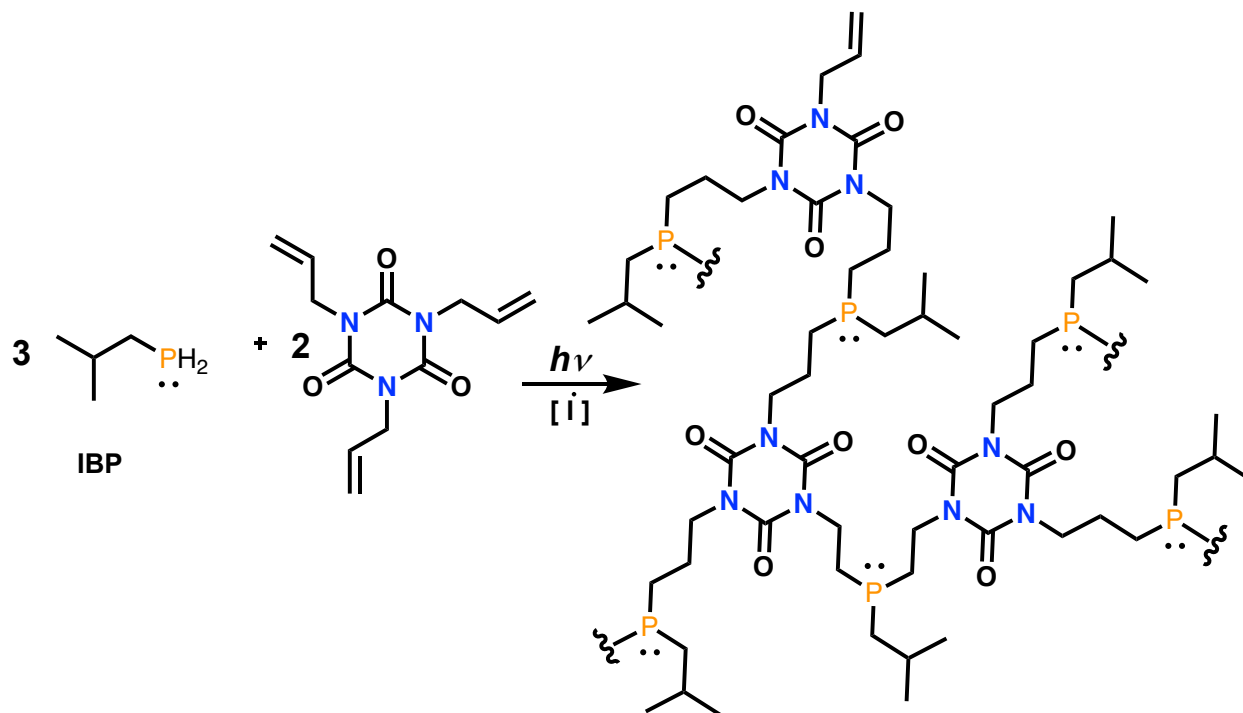


Figure 2: A typical phosphane-ene polymer, utilizing *iso*-butylphosphine and a triallyl crosslinker.

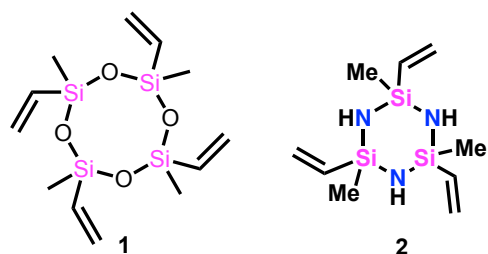


Figure 3: Volatile crosslinker molecules utilized in the PE-MLD of phosphane-ene polymer thin films.