

Figure 1 a) Schematic of CVD reactor used to synthesize graphene and b) the formed resulting sample with graphene grown on NiO_x. The sample is not shown to scale.

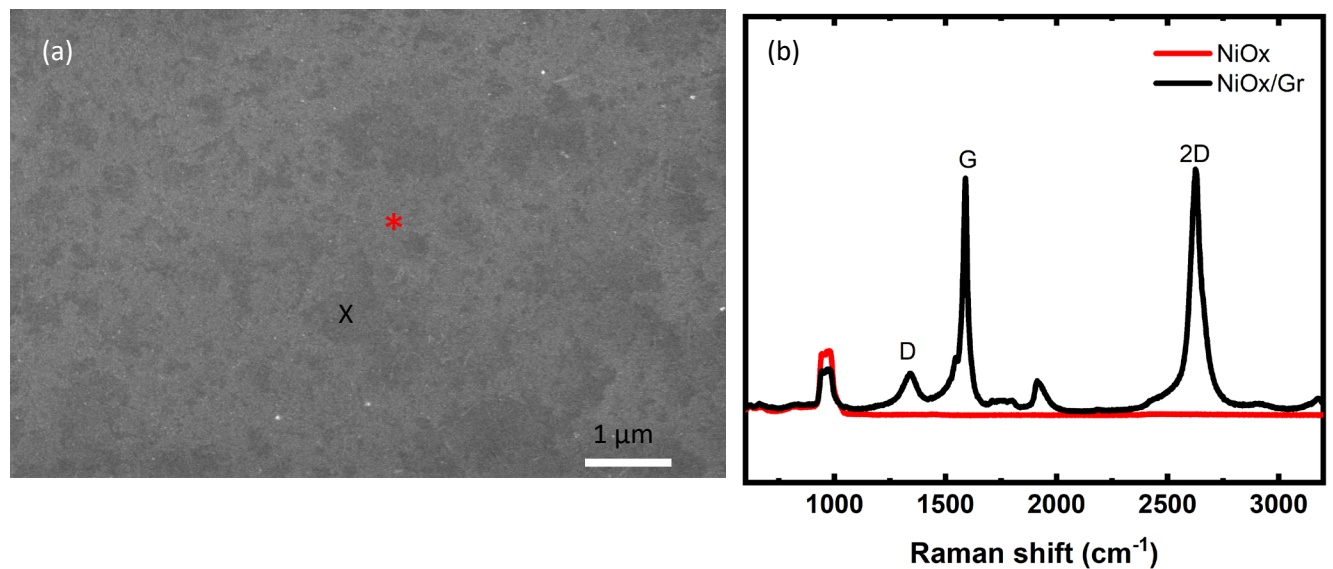


Figure 2. (a) Plan view SEM image showing the grown graphene on NiO_x/Gr (b) Raman spectra of graphene grown on Si/ALD NiO_x compared with a Si/ALD NiO_x sample treated at the same conditions without the carbon source. b). Red (*) represents the area without graphene, and black (x) the region with graphene.