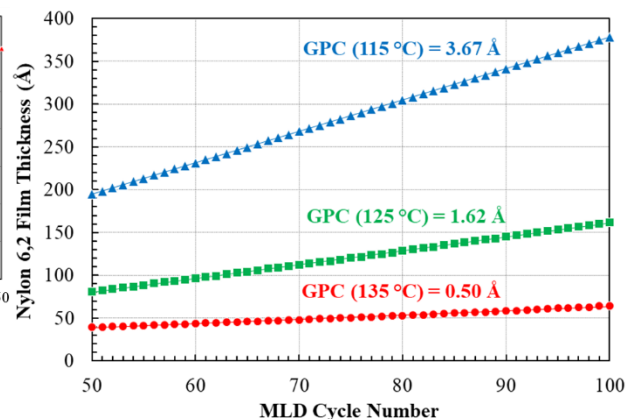
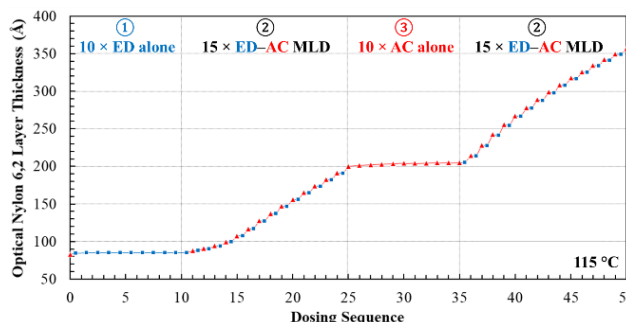
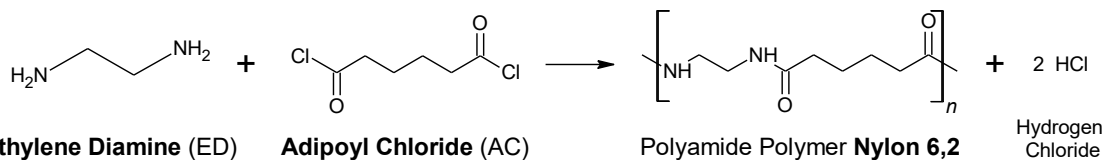


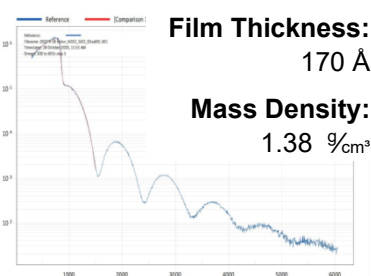
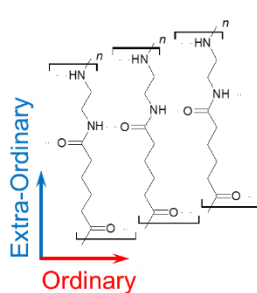
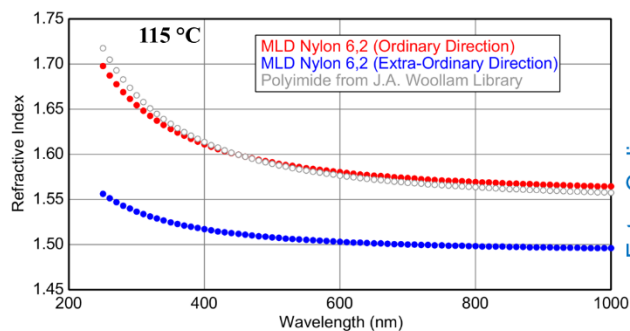
# Supplemental: Molecular Layer Deposition of All-Organic Polyamide Nylon 6,2

**Marcel Junige\*** and Steven M. George

Department of Chemistry, University of Colorado, Boulder, CO 80309, USA

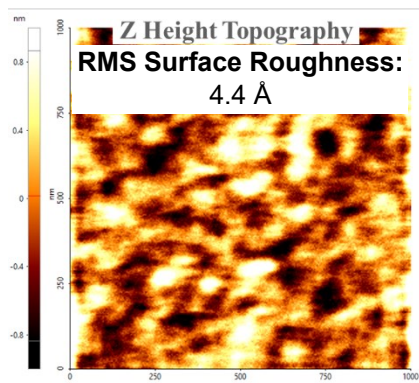


*In situ* spectroscopic ellipsometry (iSE) of linear MLD film growth characteristics: alternating, self-terminating surface reactions (left); temperature dependence (right).

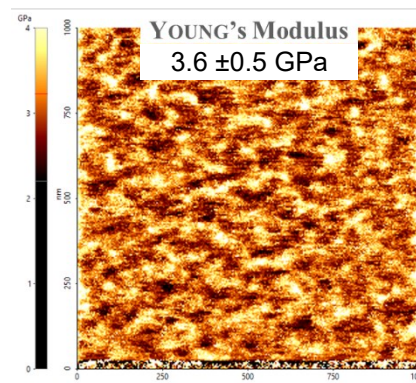


iSE refractive index of 100 nm nylon 6,2 MLD film with uniaxial anisotropy.

X-ray reflectometry mass density of 17 nm nylon 6,2 MLD film.



Atomic force microscopy topography (left) and YOUNG's Modulus (right).



\* Corresponding author: [marcel.junige@colorado.edu](mailto:marcel.junige@colorado.edu)