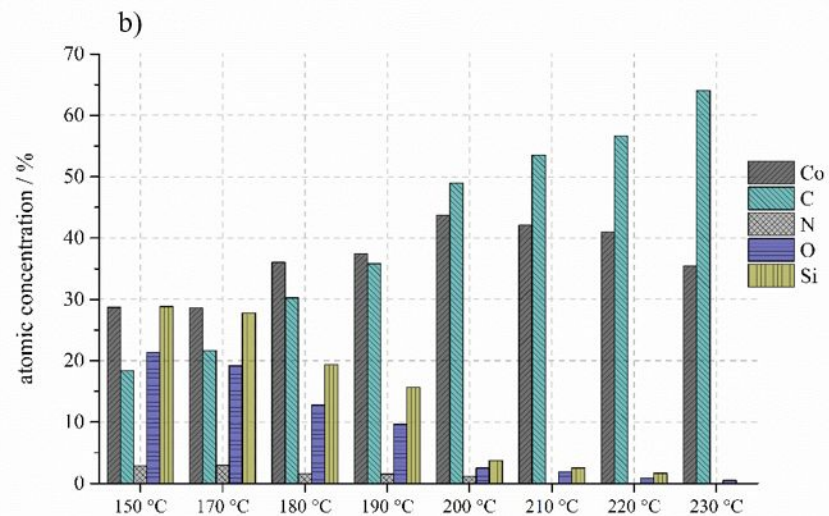
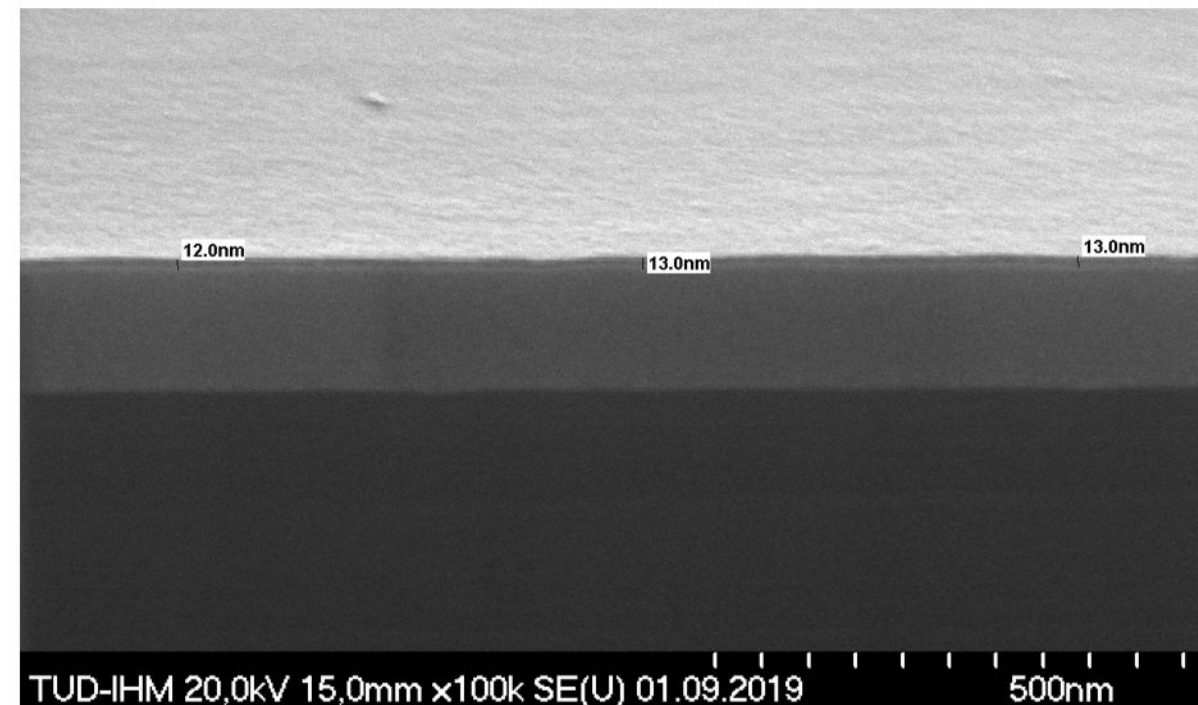


**In vacuo XPS measurements:
Film composition of Co films deposited with 400 cycles of CpCo(CO)₂**

a) combined with different plasma gas compositions.



b) combined with H₂/Ar plasma as a function of substrate temperature.



SEM image of Co film deposited with 400 cycles of CpCo(CO)₂ and H₂/Ar plasma.