

Fig. 1: Carbon fiber fabrics coated with 1. Titanium Phosphate, 2. Titanium dioxide and 3. Aluminium oxide. The color results from the interference between the carbon fiber fabrics and the different coatings.

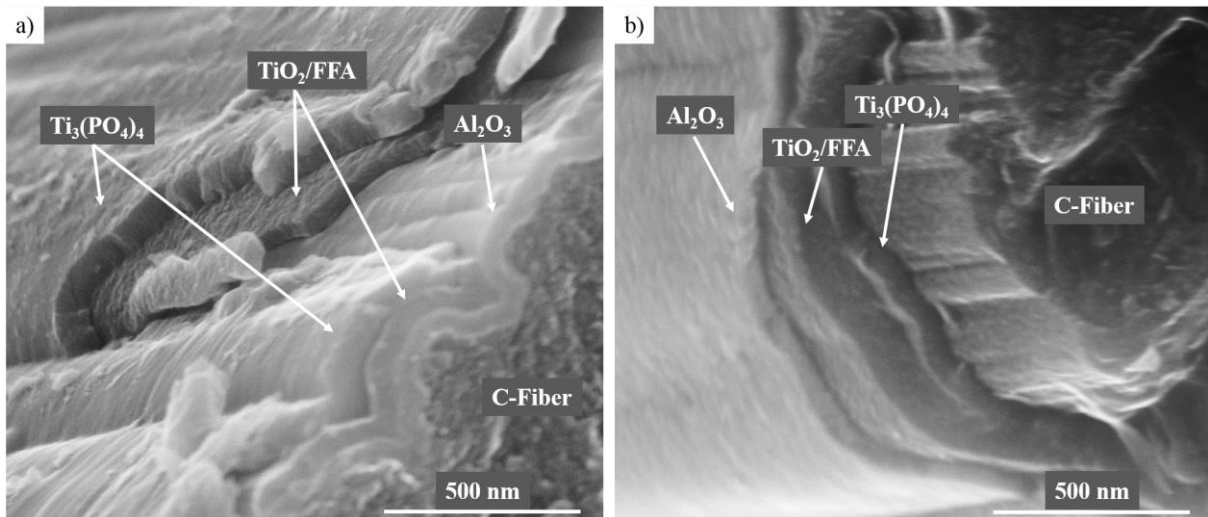


Fig. 2: a) SEM-Image of an end of a single carbon fiber with deposited layer of aluminium oxide (Al_2O_3), titanium oxide/Furfuryl alcohol (TiO_2/FFA) and titanium phosphate ($\text{Ti}_3(\text{PO}_4)_4$), b) SEM-Image of an end of a single carbon fiber with three layers. First ($\text{Ti}_3(\text{PO}_4)_4$), (TiO_2/FFA) and (Al_2O_3). The different Layers are separate from each other.